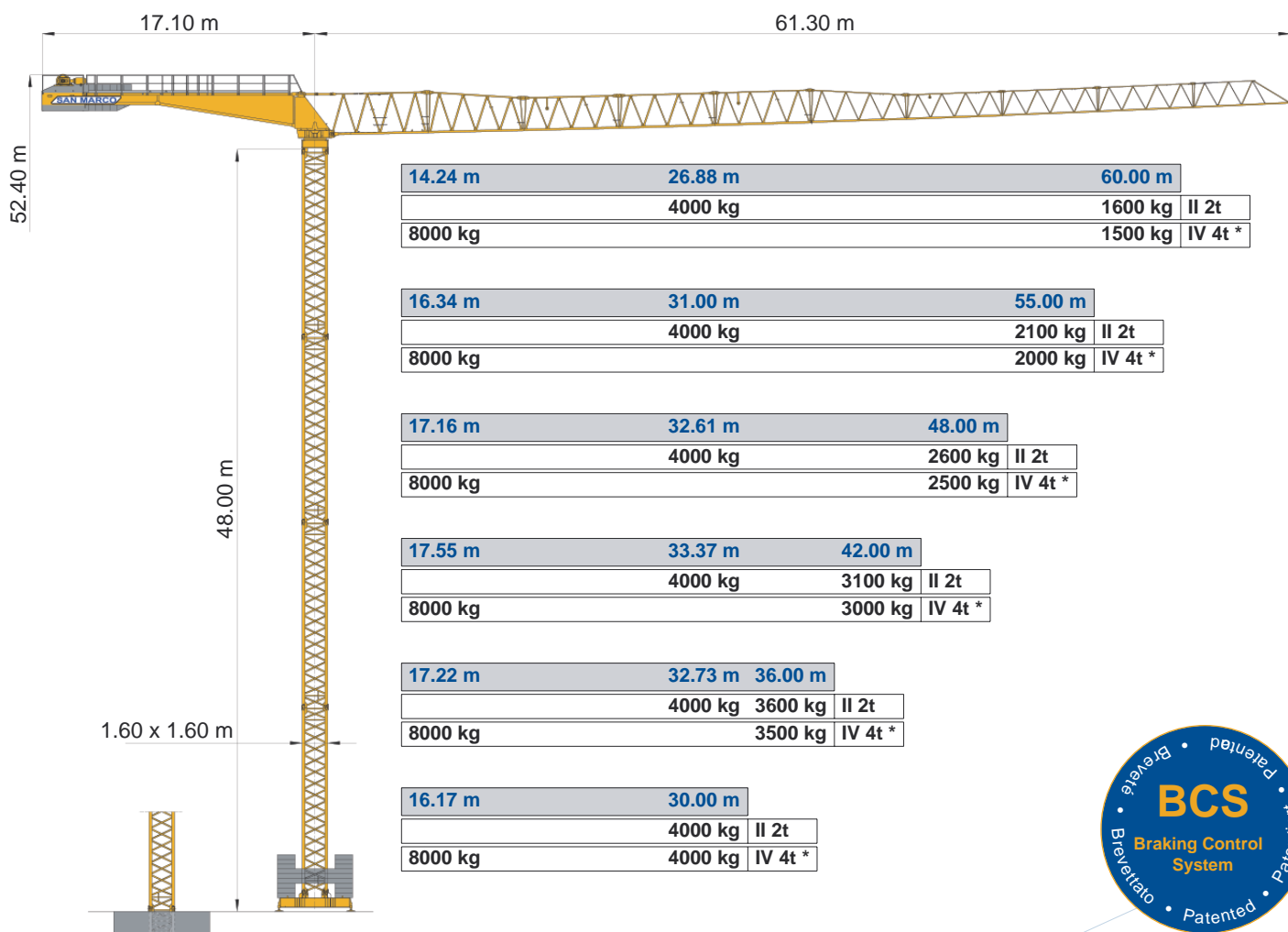


# SMT 601

## Triverter 444



m	14	16	18	20	22	24	26	28	30	32	34	36	38	40	42	44	46	48	50	52	55	56	58	60	m		
	4.00	4.00	4.00	4.00	4.00	4.00	4.00	4.00	4.00	3.82	3.53	3.29	3.07	2.88	2.71	2.56	2.42	2.29	2.18	2.07	1.98	1.89	1.81	1.73	1.66	1.60	60
t	4.00	4.00	4.00	4.00	4.00	4.00	4.00	4.00	4.00	4.00	3.82	3.58	3.37	3.19	3.02	2.86	2.72	2.60									55
	4.00	4.00	4.00	4.00	4.00	4.00	4.00	4.00	4.00	4.00	3.91	3.67	3.46	3.27	3.10												42
	4.00	4.00	4.00	4.00	4.00	4.00	4.00	4.00	4.00	4.00	3.83	3.60															36
	4.00	4.00	4.00	4.00	4.00	4.00	4.00	4.00	4.00	4.00	3.83	3.60															30

m	14	16	18	20	22	24	26	28	30	32	34	36	38	40	42	44	46	48	50	52	55	56	58	60	m		
	4.00	4.00	4.00	4.00	4.00	4.00	4.00	4.00	4.00	3.72	3.43	3.19	2.97	2.78	2.61	2.46	2.32	2.19	2.08	1.97	1.88	1.79	1.71	1.63	1.56	1.50	60
t	4.00	4.00	4.00	4.00	4.00	4.00	4.00	4.00	4.00	4.00	3.76	3.51	3.28	3.09	2.91	2.75	2.60	2.47	2.35	2.24	2.14	2.00					55
	4.00	4.00	4.00	4.00	4.00	4.00	4.00	4.00	4.00	4.00	3.98	3.72	3.48	3.27	3.09	2.92	2.76	2.62	2.50								48
	4.00	4.00	4.00	4.00	4.00	4.00	4.00	4.00	4.00	4.00	3.81	3.57	3.36	3.17	3.00												42
	4.00	4.00	4.00	4.00	4.00	4.00	4.00	4.00	4.00	4.00	3.73	3.50															36
	4.00	4.00	4.00	4.00	4.00	4.00	4.00	4.00	4.00	4.00	3.73	3.50															30

m	14	16	18	20	22	24	26	28	30	32	34	36	38	40	42	44	46	48	50	52	55	56	58	60	m	
	8.00	7.01	6.14	5.45	4.89	4.43	4.05	3.72	3.43	3.19	2.97	2.78	2.61	2.46	2.32	2.19	2.08	1.97	1.88	1.79	1.71	1.63	1.56	1.50	60	
t	8.00	8.00	7.18	6.38	5.73	5.20	4.75	4.37	4.04	3.76	3.51	3.28	3.09	2.91	2.75	2.60	2.47	2.35	2.24	2.14	2.00					55
	8.00	8.00	7.58	6.74	6.05	5.50	5.03	4.63	4.28	3.98	3.72	3.48	3.27	3.09	2.92	2.76	2.62	2.50								48
	8.00	8.00	7.77	6.91	6.22	5.64	5.16	4.75	4.39	4.09	3.81	3.57	3.36	3.17	3.00											42
	8.00	8.00	7.61	6.77	6.08	5.52	5.05	4.65	4.30	4.00	3.73	3.50														36
	8.00	8.00	7.09	6.30	5.67	5.14	4.70	4.32	4.00																	30



DIN 15018 H1 B3  
ISO 4301



ASVF 30	II	m/min	10	40	60	80	kW
		kg	4000	4000	3000	1800	
	IV*	m/min	5	20	30	40	
		kg	8000	8000	6000	3600	

ACVF 4.0	m/min	15	30	45	60	kW
		4.0				

rpm	0.1	0.3	0.5	0.8	daNm
	2x6.5				

	h 24 m	h 30 m	h 36 m	h 42 m	h 48 m	h 54 m	h 60 m	(kg)
180/15 1.60 x 1.60 x 11.60 m	2	2	3	3	4	3	4	3700
180/15 1.60 x 1.60 x 5.80 m		1		1		1		1900
180/15 1.60 x 2.30 x 11,60 m						1	1	4700

m	m	t
4.5x4.5	12-18-24	42.0
4.5x4.5	30	49.0
4.5x4.5	36	56.0
4.5x4.5	42	70.0
4.5x4.5	48	84.0
6.0x6.0	54	80.0
6.0x6.0	60	100.0

m	30	36	42	48	55	60
t	5.8	7.8	8.9	10.1	11.3	12.5

V	Hz	kW
380	50	50



ORWIL  
 : (8442)26-00-62,  
 26-91-91  
 E-mail: toptechinc@orwil.ru  
 www.gru.orwil.ru