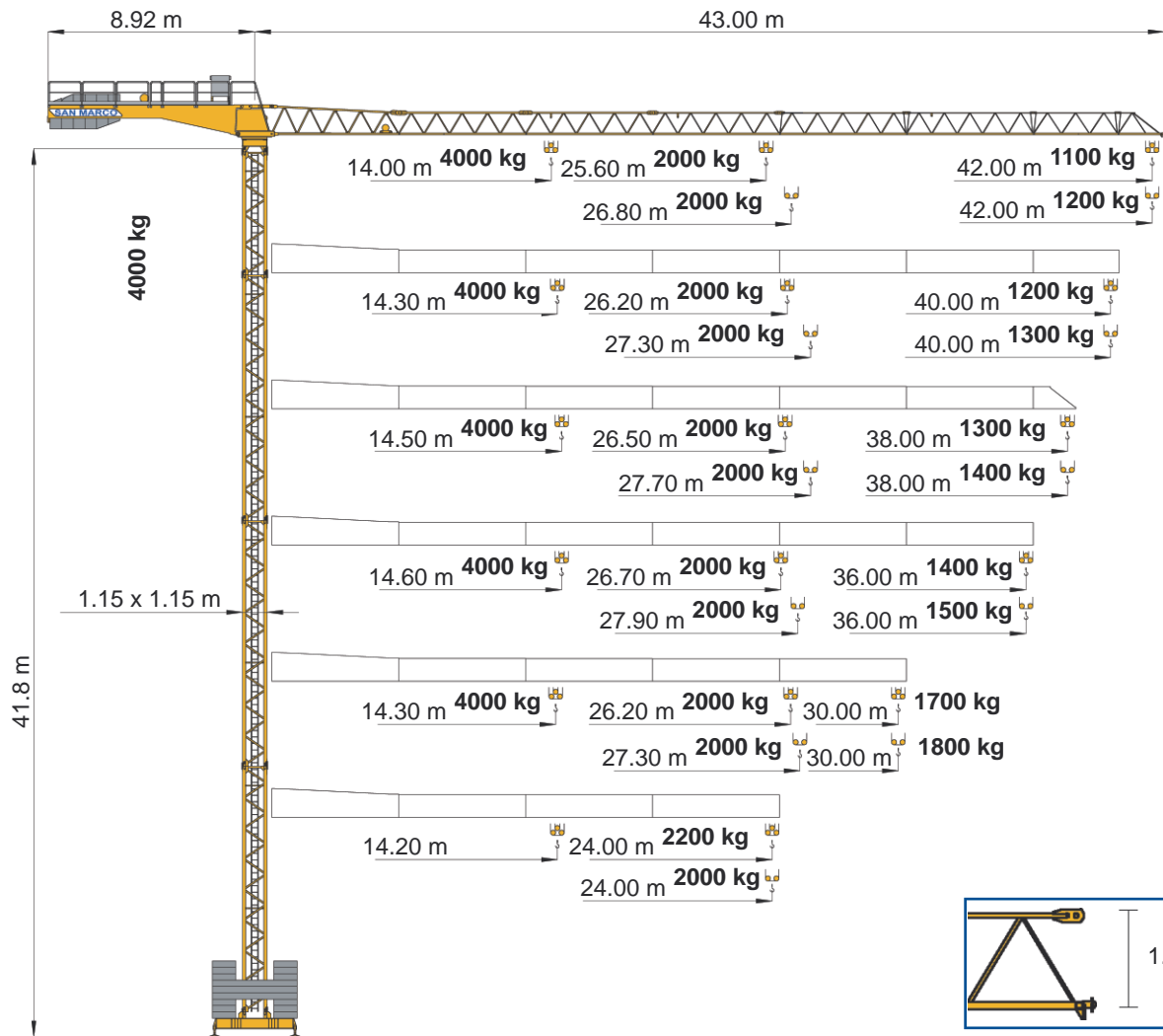


SMT 420

Triverter 444



m	12	18	24	26	28	30	32	34	36	38	40	42	m
	2.00	2.00	2.00	2.00	1.90	1.76	1.63	1.53	1.43	1.34	1.27	1.20	42
	2.00	2.00	2.00	2.00	1.95	1.80	1.68	1.57	1.47	1.38	1.30		40
t	2.00	2.00	2.00	2.00	1.97	1.83	1.70	1.58	1.48	1.40			38
	2.00	2.00	2.00	2.00	1.99	1.84	1.71	1.60	1.50				36
	2.00	2.00	2.00	2.00	1.94	1.80							30

m	12	18	24	26	28	30	32	34	36	38	40	42	m
	2.00	2.00	2.00	1.97	1.80	1.66	1.53	1.43	1.33	1.25	1.17	1.10	42
	2.00	2.00	2.00	2.00	1.85	1.70	1.58	1.47	1.37	1.28	1.20		40
t	2.00	2.00	2.00	2.00	1.88	1.73	1.60	1.49	1.39	1.30			38
	2.00	2.00	2.00	2.00	1.89	1.74	1.61	1.50	1.40				36
	2.00	2.00	2.00	2.00	1.84	1.70							30

m	12	18	24	26	28	30	32	34	36	38	40	42	m
	4.00	3.01	2.16	1.97	1.80	1.66	1.53	1.43	1.33	1.25	1.17	1.10	42
	4.00	3.08	2.21	2.02	1.85	1.70	1.58	1.47	1.37	1.28	1.20		40
t	4.00	3.13	2.25	2.05	1.88	1.73	1.60	1.49	1.39	1.30			38
	4.00	3.15	2.26	2.06	1.89	1.74	1.61	1.50	1.40				36
	4.00	3.07	2.20	2.01	1.84	1.70							30
	4.00	3.07	2.20										24

2.5 t*



DIN 15018 H1 B3
ISO 4301



ASVF11	II	m/min	10	30	45	60	11
		kg	2000	2000	1400	800/1000	
	IV *	m/min	5	15	22	30	11
		kg	4000	4000	2800	1600/2000	

V	Hz	kW
380	50	25

ACVF1.8	m/min	10	20	30	40	1.8
		kg	2000	2000	1400	

rpm	0.1	0.3	0.5	0.8	6.5
	kg	2000	2000	1400	

	h 24 m	h 30 m	h 36 m	h 42 m	h 48 m	h 54 m	h 60 m	(kg)
150/12 1.15 x 1.15 x 11.60 m	2	1	2	1				2200
150/12 1.15 x 1.15 x 5.80 m		1		1				1200
150/15 1.15 x 1.15 x 11.60 m		1	1	1	3	2	2	2400
150/15 1.15 x 1.15 x 5.80 m						1		1500
180/15 1.15 x 1.15 x 11.60 m				1				3100
180/15 1.15 x 1.60 x 11.60 m					1	1	1	3500
180/15 1.60 x 1.60 x 11.60 m						1	1	3700
180/15 1.60 x 2.30 x 11.60 m							1	4700

m	24	30	36	38	40	42
t	7.15	7.8	10.0	10.0	11.1	11.1

m	m	t
2.8x2.8	12-18-24	36.8
2.8x2.8	30	46.0
2.8x2.8	36	64.4
3.2x3.2	12-18-24	30.0
3.2x3.2	30	40.0
3.2x3.2	36	55.0
3.8x3.8	12-18-24	25.0
3.8x3.8	30	30.0
3.8x3.8	36	40.0
3.8x3.8	42	55.0



ORWIL
 : (8442)26-00-62,
 26-91-91
 E-mail: toptechinc@orwil.ru
 www.gru.orwil.ru